

SOGSG PIS-YOOB

sēn gomd Haydā (Pekrā) la
Nifaasā (rogem-zum) buudo



Yaa sēn tū ne mo-kēengā gulsgo

A Muhammad [bn Salih Al-Usaymiine

Wēnd na yoof-a, la a rogdb a yībā, la lisaambā gilli

ستون سؤالاً في أحكام الحيض والنفاس - موري



بيان الإسلام
Bayan AL-Islam



مؤسسة الشيخ
محمد صالح المنجد
رحمه الله تعالى



**Sogsg pis-yoob
sẽn gomd Haydã
(Pekrã) la
Nifaasã (rogem-
zum) buudo**

شركاء التنفيذ:



المحتوى الإسلامي



رواد الترجمة



جمعية الريوة



دار الإسلام

يتاح طباعة هذا الإصدار ونشره بأي وسيلة مع
الالتزام بالإشارة إلى المصدر وعدم التغيير في النص.



Telephone: +966114454900



ceo@rabwah.sa



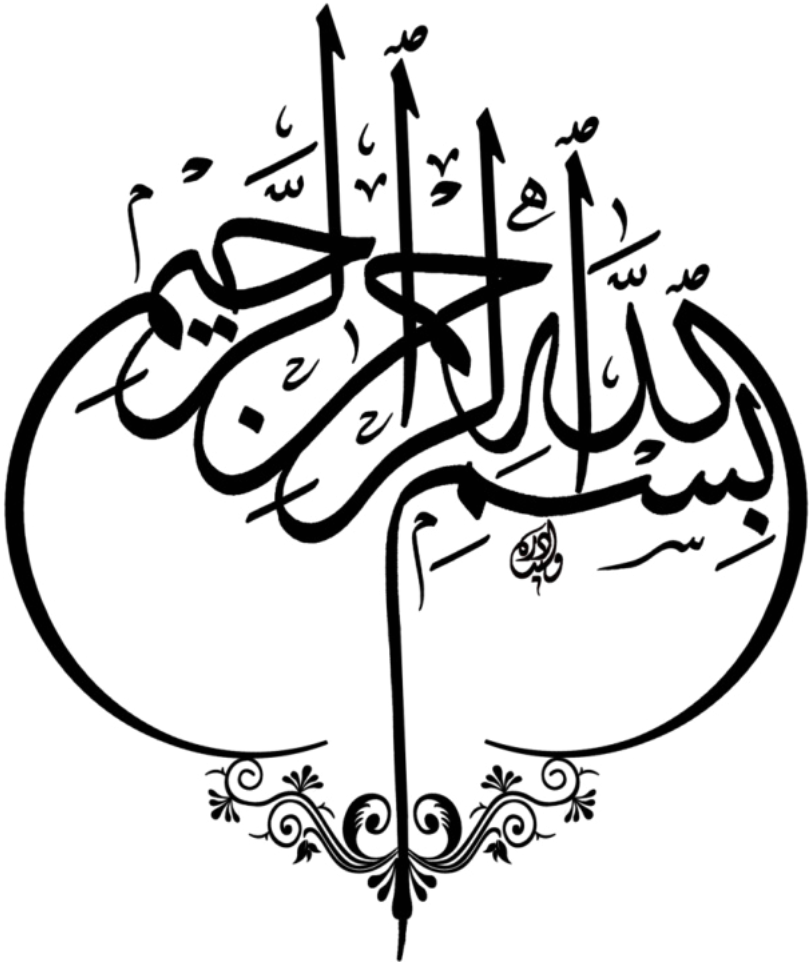
P.O.BOX: 29465



RIYADH: 11557



www.islamhouse.com



D na n singa d goama ne Wënd Yuurã Albarka, sën yaa
Düni zäng Yosldã, n yaa Muumin-rãmb yolsda laahr daarã

Gom-tuusgo:

Pëgr be ne Wënde, la puusg la tulgre be Wënd Tën-
tuumã zugu, a Mohammade, sën yaa Abdullaah biiga, la a
zakã rãmb la a Şahaabsã, la ned ning sën kell n ruk bãmb
sorã n tãag dīinã rolb raare, rë loogr poorë:

M ma-bi-poak sën yaa Iuslaama!

Sogsgã sën yaa wusg yīngã, sën wat bāngdbã nengë, sën
këed ne haydã (pekrã) buudo, tūudum-rãmbã pugë, tōnd
yãame, tū sōmbame tū d tigs sog-s-rãmb nins sën ylem
wakat fãa gilli, la naor wusg fãa d na n maan-a la koεεg
koεεga, tū rë n tar yam-leoogo.

M ma-bi-poak sën yaa Iuslaama!

Tōnd talla yã-beed n na n tigm-a, bul yīnga t'a na yū n
be fo nugë wakat fãa, la rēnda yaa Wënd Sãri wã faheng
sën pak wusgã yīnga, la bul yīng tū f tū Wënde ne bāngre
la nenem.

Nekre: Tōe n vēnega ne ned ning sën lagsd gafã sungrë
wã tū sogsgã sãndã yilemdame, la a sã n ges sōama, a na n

mikame ti bāngr baasg n be leokr ning pugē, ti ka be a to wā pugē ye, ti tōnd yā ti d ka sōmb n yīm a yell ye.

La Wēnd na puus la A tulg tōnd Nabiyaamā a Muhammad, la a zak rāmbā la a Şahaabsā zānga.

Sēn be Haydā (pekrā) buud-rāmbē Puusgē wā la no-loeerē wā

S1: Pag sã n yulg n yi a hayd (pekrā) Fagir poorē turga, rē yīnga, a yōkda a meng n loe noorā ra-kānga bu, ti raarā kell n yaa no-loeere, bu rā-kāng raarā no-loeerā rolb zao a zugu?

L1: Pag sã n yulg n yi a haydā (pekrā) Fagirā pukr poorē, bāngdbā tara koes a yiibu, sã n yaa ne a kell n gād ra-kāng no-loeerā:

Pipi koεεga: yaa tulae ne-a t'a yōk a menga, raarā sēn kellā, la b ka geend n kō-a ye, yaa tulae ne-a t'a role, woto la gomd sēn sāeeg nyuda sã n yaa ne Limaam Ahmad Mazhabā (Sorā) pugē, Wēnd na yols-a.

Gomd a yiib soaba: yaa ti ka zao a zugu t'a yōk a meng ra-kāng raarā sēn kella ye, bala yē yaa raare a no-loeerā sēn ka manegd a pugē, bala yēnda, a rag n yaa hayd (pekr) soaba raarā sungrē, rēnd a ka no-loet ye, rēnd a no-loeerā

sēn ka manegdā, a yōk-m-mengā ka tar yōod ye, rēnd zamaan-kāng yaa zamaane sēn ka gıdg yēnda t'a maan a sēn rat ye, bala Šari sagl-a lame t'a kao raarā sungrē, pus n yaa Haraam ne-a t'a loe raarā sungrē.

La no-loeer ning Šari wā sēn kō sorā, yaa fo yōk f menga, n yi bōn-kaoodı wā gilli, tı yaa Wēnd tūub yīnga, sēn na n sung Fagirā pukri, n tug n tāag wīndgā luuse.

La koεεg-kāngā, wala fo sēn ne-a wā, yē n wili n yud koεεg ning sēn yeel tı yaa tılae t'a yōk a mengā, la koes a yiibā fāa gill pugē, ra-kāng rolbā zao a zugu.

S2: Hayd soab sā n yılge, n so Fagirā poorē, n puuse, n kell n pids a raarā no-loeerā, rē yīnga yaa tılae ne-a t'a rol ra-kāng bu?

L2: Hayd soab sā n yılğ taoor tı Fagir na n ka ta, baa tı yaa minit a yembre, la a tar bāng-n-wāaka tı haydā (pekrā) wāagame, rēnd sā n mikame tı yaa Ramadaan pugē, no-loeerā zao-a lame, t'a no-loeerā ra-kāng raarā yaa sēn manege, a rolba ka leb n zao a zug ye, bala a loee noorā tı yēnda yaa yılgemde, baa t'a sā n ka so rēnda Fagirā poorē yell ka be ne-a ye,

Woto bala, yaa wala raa sēn na n yaa genaab soaba, sēn tū ne kēed-n-taare maa zamsdo, n ri sugrā, n ka so sã n ka Fagirā poorē, a no-loeerā manegame.

La m na n kell n bēda kaanē, n nek yell a to sēn be pagbē wā, haydā (pekrā) sã n wa waa a nengē, n mik t'a rag n loee ra-kāng raarā, pagb sānda tēedame tū haydā (pekrā) sã n wa waa a nengē, a sēn kao noorā, taor t'a na n ka puus Sāafā, ra-kāng raarā no-loeerā sāmame.

La woto ka tar yēgr ye. Haydā (pekrā) sã n wa tug n wa wīndgā luus poorē, baa tū yaa nif kamsgo, a no-loeerā yaa sēn pidi n manege,

S3: Rē yīnga, yaa tūlae n zao rogmā zum rāmbā, tū b loe noore la b puuse, sã n mikame tū b yulgame taor tū rasem pis-naasā na n ka ta?

L3: N-yee, wakat ning rogem zum soab sēn yulge, taor tū rasem pis-naasā na n ka ta, yaa tūlae n zao a zugu, t'a loe noorā, tū sã n mikame t'a bee Ramadaan puga, yaa tūlae ne-a t'a puuse, sakda ne a sūdā t'a lagm-a, bala, a yaa yulgemde, būmb sēn gūgd no-loeer ka be a pugē, būmb sēn gūgd Puusg ka be ye, būmb sēn gūgd kēed-n-taar me ka be ye.

S4: Pag haydã (pekrã), kiuugã pugẽ a sã n minimame tu yaa rasem a nii maa yopoe, rẽ poorẽ tu pekrã kell n duum ne-a, vugri maa noor a yiibu maa tu yud rẽnda, yẽ soab buud na n yu wãn-wãnã?

L4: Pug-kãngã, a rasem-rãmbã sã n minimame tu yaa rasem a yoobe maa rasem a yopoe, rẽ poorẽ, t'a wa woglge n lebg nii maa wae, maa piiga, maa piig la a yembre, yẽ soabã, a kelled n paame n ka puusdẽ ye, halu tu wa tug n wãage. Bala Nabiyaamã -Wënd puusg la A tulgr be a yĩnga- a ka yãk toaaga sãn welge sãn keed ne hayda (pekrã) ye, La sid la hakuka Wënd yeelame A Naam zẽkame:

﴿وَيَسْأَلُونَكَ عَنِ الْمَحِيضِ ۗ قُلْ هُوَ أَدْنَىٰ...﴾ [البقرة: 222]

{ La b sokda foom (haydã) pekrã ziigẽ yelle, yeel b tu yẽ yaa rẽgdo } [Albakara: 222], Rënd zumã sã n kell n be beenẽ, pagã kelled n paa a alhaalẽ wã, halu tu wa wãage t'a so, rẽ poorẽ t'a puuse. Rënd a sã n leb n wa a kiiug a yiib soabã n booge n ka ta pĩnd rẽnda, a soodame tu sã n wãage, baa tu sã n ka ta wakat ning sãn loogã.

Rënd sãn paka bala, yaa tu paga wakat ning pekrã sãn wat n be ne-a fãa a ka puusd ye, zem tu haydã zemsa ne yẽndã sãn minim n yãt tu loogã, maa paasame, maa boogame, sã n wãag bala a puusdame.

S5: Pag sēn tar rogem zum, rē yīnga a zīndida rasem pis-naase, n ka puusde n ka loet noore, bu gēsgā yaa zumā sēn na n wāag n bas-a bala, tu zumā sēn wat n wāag wakat ninga a yulgdame la a puuse? La yulgemdā me wakatā woglem sēn paood n yud yaa wānā?

L5: Pag sēn tar rogem zum a ka tar wakat sēn yāk toaag ye, ka woto ye, zumā sēn wat n beē fāa a zīndidame, a ka puusd ye, a ka loet noore, a sūdā ka legemd-a.

La a sā n wa yulge -baa tu rasem pis-naasā ka ta- baa t'a ka zīnd n yug rasem piiga maa rasem a nu- a puusdame la a loe noore, a sūdā me kēeda ne-a, yell ka be beenē ye.

La sēn pak bala, yaa tu rogmā zum yaa būmb sēn yaa vēenega, t'a buudā yaga ne a belmā la a kaalmā. Rēnd a sēn wat n beē fāa, a buudā tabendame, pag sā n wa yulg n yi-a me a yita a buudā pugē.

La a sā n wa tug n yug rasem pis-yoobe, wakat-kāngā a lebgda kaadg zum, paga zīndidame n zems yē haydā rasem-rāmb sēn da zemsdā, rē poorē t'a so, la a puuse.

S6: Zum bilf sā n yi pag nengē n tosge Ramadaanā wīndga puga, tu zī-kāngā kell n duumd ne-a Ramadaanā kiuugā gilli la yē loeta noorā, rē yīngā a no-loerā manegame bu?

L6: N-yee, a no-loeerã manegame, la zı-tosd-kãensã a ka baa fuı ye, bala yaa bũmb sãn yit zı-soy wã, la vũun waame sãn yi Saydnaa Ali [bn Abu Ʀaalb nengẽ -Wẽnd yarde be a yĩnga- t'a yeelame:" tu ad zı-tosdı-kãensã sãn yit wala yõ-yũndi wã, a ka bũmb sãn yaa hayd ye. Woto la b togsda sãn yi a nengẽ, Wẽnd yard be a yĩnga.

S7: Pekar soaba maa rogem zum soaba, a zumã sã n yals taoor tu Fagirã na n ka ta, la a ka paam n so rẽnda Fagirã poorẽ, rẽ yĩnga a no-loeerã manegdame bı ka manegde?

L7: N-yee, pekar soab no-loeer wãagdame t'a sã n ylg taoor tu Fagirã na n ka ta ye la a ka so rẽnda Fagirã poorẽ, woto bala la rogmã zum rãmba; bala yẽ lebga sãn sõmb b ne no-loeer rãmba, a bilgri yaa wala genaab sãn be ne a soaba, Fagirã sã n puk t'a ket n yaa genaab soaba n na n ka so, ad a no-loeerã manegdame; Ne A koεεg sãn yeele, A Naam zẽkame:

﴿...وَأَبْتَعُوا مَا كَتَبَ اللَّهُ لَكُمْ وَكُلُوا وَاشْرَبُوا حَتَّىٰ يَتَبَيَّنَ لَكُمُ الْخَيْطُ الْأَبْيَضُ مِنَ الْخَيْطِ الْأَسْوَدِ مِنَ الْفَجْرِ...﴾ [البقرة: 187]

{Rẽnd moasã kẽ-y ne-ba n bao Wẽnd sãn puı n kõ-yã, la y ru, la y yũ hal tu wa vẽneg ne yãmba laong pεelgã n welg ne laong sablgã, sãn yaa tõd-beoogo} [AL-Bakara: 187] La Wẽnd sã n kõ sore -A naam zẽkame- tu b maan kẽed-n-

taare halu n tug n tãag Fafir vënegre, rënd wilgdame tu soobã ka na n yi rënda Fagirã pukr poorë, n leb n paas a Aalsa hadiisã -Wënd yard be a yĩnga- ti Nabiyaamã -Wënd puusg la A tulgr be a yĩnga- a rag n vëegda beoogo t'a tar genaabã a sën maan këed-n-taar ne a zakã rãmba la mikdame t'a yaa no-loeta. Rat n na n yeele: ti puusg la A tulgr be a yĩnga a ka sood genaabã rënda Fagirã pukr poorë.

S8: Pag sã n neë ti yaa wala zumã waame, la zumã ka yi tdoor ti wĩntoogã na n pa luu ye, maa a wumdã kiuugã zabdem, rë yĩnga ra-kãng raarã no-loeerã manegame bu, bu yaa tulae ne-a t'a rol-a?

L8: Pag sën ka tar hayd sã n wumd pekrã rãamde ti mik t'a yaa no-loeta, ti zumã ka yi rënda wĩntoogã luus poorë, maa a wuma pekrã zabdmã rãamde, la a pa yi rënda wĩntoogã luus poorë, rënd a no-loeerã ra-kãng raarã manegame, la pa zao a zugu t'a lebg n yilm-a ti sã n yaa farila, woto bala yel-sõmdã ka sãame ti sã n yaa naafula.

S9: Pag sã n yã zum, la a ka tar hakuk ti yãwã yaa pekr zum ye, yë ra-kãng no-loeerã buud yaa wãn-wãna?

L9: A no-loeerã ra-kãng raarã yaa sõma; bala yëgrã yaa t'a ka tar pekre halu t'a wa tug n bãng n wãag ti yaa pekre.

S10: Wakat sãnda pag yãta zumã vũun bilfu maa tẽgs-tẽgs tũ yaa bilf wusgo n wat gurs-gurse raarã wakat-rãmba pugẽ, wakat ningã a yãt-a la pekrã kiuugã sasa la pekrã ka sigd ye. La wakat ninga a yãta zı-kãensã sãn ka a kiuugã wakate, rënd a no-loeerã buud yaa wãn-wãna halhaal a yiibã pugẽ?

L10: Ra renga taoore d sãn loek sok-kãngã buudu pẽem-pẽem, la bũmb ning sãn kete yaa t'a sã n yãta zı-tosdu wã a kiuugã rasem-rãmbẽ, tũ yẽnda tẽed-a tũ yaa pekr ning yẽ sãn mi wã, rënd wakat-kãngã a yaa pekre.

S11: Pekar la rogem zum soaba, rẽ yĩnga b ritame la b yũud Ramadaãna wĩndg bu?

L11: N-yee, b ritame la b yũud Ramadaãna wĩndga, la sõma sãn yude yaa tũ b solge tũ b sã n tara koamb zakẽ wã; bala yẽ rubã a yirbda koambã.

S12: Pekar maa rogem zum soaba a sã n yulg Laansar wakato, rẽ yĩnga Zafarã Puusg yaa tilae ne-a n lagem ne Laansarã bu, bũ ka tilae ne-a tũ sã n ka Laansarã bala?

L12: Gomd sãn tug n wili n yud masaal-kãngã puga: yaa tũ bũmb ka zao a zugu sã n ka Laansarã bala; bala daliil ka be n wiligdẽ tũ Zafarã Puusg yaa tilae n zao a zug ye, la yẽgrã me yaa tũ baa fuũ ka zao a zug ye, sãn paasdame yaa

tu Nabiyaamã -Wënd puusg la A tulgr be a yĩnga- a yeelame: «sën paam a Rakaar Laansara wakat taor tu wĩndigã na n pa lu sid la hakuka a soab paama Laansarã», La a ka togs t'a paama Zafar ye, rënd Zafarã sã n rag n yume n yaa tlae n rog a zugu, Nabiyaamã rag n na vēnegē yel-kāngã -Wënd puusg la A tulgr be a yĩnga- Sën paasde yaa tu pag sã n yã a pekrã Zafarã wakat sën ta poorē būmb ka zao-a tu sã n ka Zafarã yaoob bala laasarã, n lagem ne Zafarã tigimdame n puus ne Laansarã fãa wã, la welgr ka be ne masaal-kāngã ne sokrã sën wa a soab zugã ye.

Woto yĩng kitame tu gomd sën wili n yuda yaa tu ka zao a zug rēnda Laansarã Puusg bala; bala daliil-rāmbã la mak-n-taasã wĩnigda woto, le yaa woto bala la a sën na n yulge taor tu Saafã wakat na n ka yi, wakat-kānga būmb ka zao-a tu sã n ka Saafã Puusg ye, Magribã Puusg ka zao a zug ye.

S13: Pagb nins pusã sën sãamda b halhaalã ka zuugde: maa tu pugã sãame taor tu biigã na n ka naan ye, maa pugã sãame biigã sën naan poorē, t'a yalē wã vēnege. Rënd a no-loeerã buud yaa wãn-wãna a pugã sãang raare la rasem-rāmb nins a sën yãt zumã no-loeerã buudo?

I13: Sã n mikame tu biigã naanegã na n ka yōgnege, rënd a zumã woto wã ka rogem zum ye, sã n yaa woto a loetame la a puusdē, a no-loeerã me manegame.

La sã n mikame tu biigã paam n naaname zumã yaa rogem zum, ka sakd ne-a t'a puus a pugẽ ye, ka sakd ne-a t'a loe noore.

La zeng-raoog sãn be masaal-kãngã pugẽ maa gom-tikdga: yaa tu sã n mikame tu biigã naaname rënd zum ning sãn yita yaa rogem zum, la biigã sã n ka naane zumã ka rogem zum ye. La sã n mikame tu zumã yaa rogem zum yaa haraam a zugu bũmb ning b sãn gudg ne rogem zum-rãmbã. La sã n ka rogem zum yel-kãng ka haraam (gudgd) a zug ye.

S14: Zum sã n yi pug soab nengẽ Ramadãanã no-loeer pugẽ, rẽ yĩnga yel-kãng tara vũun a no-loeerã pug bu?

L14: Pekra zum sã n yi n mik tu pagã a yaa sãn loe noore, a no-loeerã sãamdame, ne Nabiyaamã -**Wënd puusg la A tulgr be a yinga-** sãn yeelã: «**Rẽ yĩnga a sã n yã haydã a ka basd Puusg la no-loeer laa?**» Rẽ n kit tu d geend wãnde tu yaa sãn kaood no-loeere, rogmã zum me yaa woto, la pekrã la rogmã zum yiybã yaa bũmb sãn sãamd no-loeere.

La zumã yiyb pug soab nengẽ Ramadaana wĩndg pugẽ, sã n mikame tu yaa pekre, rënd yẽ me yaa wala sãn pa tara pugã pekr buud bala, rat n na n yeele: t'a keosda no-

loeerã, la sã n mikame tu ka pekre, a ka tar vûun a no-loeerã zug ye.

La Pekar zum ning sãn tõe n yi pug soab nengẽ wã, yaa sãn na n mik tu yaa Pekar sãn kell n yit n ka tol n wãagd n bas-a a sãn rik pugã tẽka ye, a kell n wata a nengẽ wakat nins a sãn da minim n yãt haydã t'a ka tar pugã, rënd zĩ-kãngã a yita Pekre koεeg sãn wil n yud pugẽ, tu Pekarã buud zao a zugu.

La zumã sã n wãagame n bas-a, rẽ poorẽ t'a lebg n yãt zum tu ka zum ningã a sãn nong n yãt-a buud ye, rënd zĩ-kãngã a ka tar vûun a no-loeerã zug ye, bala ka Pekar ye.

S15: Pag sã n yã zum a kiuugã rasem-rãmb pugẽ raar a yembre, tu raar ning sãn pugdã a ka yãnd zum ye wĩntoogã gilli, yaa bõe la a sõmb n maane?

L15: Sãn wõnd yĩngr-yĩngri, yaa tu wãagr ningã maa koεeng ning yẽ sãn yãt a Pekarã rasem-rãmb pugẽ wã, kell n lagma Pekarã bala, rënd b ka geend yãwã tu yaa Yulgr ye, rënd sã n yaa woto, a kelled n paame bala n pa maand bũmb ninga b sãn gudgd ne Pekar soaba La bãngdbã sãnda yeelame: ned ning sãn yãt raar ninga zum, raar ning yulgre, rënd zumã yaa haydo (Pekar) tu yulgemdã yaa sãn wãag la rẽ n tall woto n tug n tãag rasem piig la a nu, T'a sã n wa tug n ta rasem piig la nu wã masa, sãn be rẽ poorẽ wã

lebga kaadg zum, la woto la koεeg sēn puki n yud limaam Ahmad [bn Hānbal Mazhabā (Sorā) puga, Wēnd na yols-a.

S16: Pekrā rasem baasdsē wā, taoor tu yulgrā pa ta, naoor wusgo pagbā ka ne zumā vūun ye, rē yīnga a tōeeme n loe noor ra-kānga la a yaool n pa yā zur-πεεlgā, bi a maanda a wānā?

L16: Sā n mikame tu yēnda rag n minimame n ka yāt zur-πεεl-kāensā -wala sēn be pagb sāndā nengē wā- a loetame, la sā n mikame tu yēnda kiuugā pugē a rag n da yāt-a lame yē soabā ka loet ye, halı t'a tug n wa yā zur-πεεlgā.

S17: Pekarogem zum soaba b Alkurāan kareng buud yaa wān-wānq, zem tu yaa sēn na n ges n kareme, maa yaa sēn na n rulsi Daruur (pokr) wakato, wala a sēn na n yaa karem-biiga, maa a yaa karem-saam poaka?

L17: Yell ka be ne pag sēn tar Pekre maa rogem zum t'a karem Alkurāanā ye, tu sā n mikame tu yaa tulsem n be beenē, wala pag sēn yaa karem-saambā, maa karem-biig sēn karemd a wurdo (rat n yeel t'a sēn minim n karemd būmb ningā) wīndga la yungo.

La sā n yaa kareng ning sēn yaa keoor la yel-sōmd baobā, sōma sēn yud ne-a yaa a ra maan rē ye, bala

bāngdbā wusg fāa b neeme ti pekr soaba, ka sōmb ne-a t'a karem Alkurāanā ye.

S18: Rē yīnga yaa tulae ne pekr soaba t'a toeem a futā, t'a sã n yulg n ε bu, la yaa y bāng ti zumā ka ta a fuugā rēgd me ka ta-a?

L18: Ka tulae ne-a t'a maan woto ye, bala Pekrā ka rēgemd yīngā ye, Pekar zum rēgemda zīig ning sēn bolā bala, rē n kit ti Nabiyaamā, **Wēnd puusg la a tulgr be a yīnga-** sagla pagbā ti pekrā zum sã n ta b futā bu b pek-ba, la b kell n puus b futā pugē.

S19: Pag sēn na n kao no-loeerā kiuug pugē rasem a yopoe la mikame t'a ra tara rogem zum, la a ka tōog n role halı ti Ramanaadan a yīibē soabā wa ta, ti rasem a yopoe gilg-a Ramadaan a yīibē soaba t'a yēsemdē, t'a ka tōog n rol ye, ti bala bāag n be ne-a. Rēnd bōe n be ne pug-kāngā, ti Ramadaan a tāab soaba yaa sēn kolge? Loek-y tōndo Wēnd na yao-yā.

L19: Sã n mikame ti pug-kāngā yaa wala a sēn togs a mengā yellā - ti bala a bee bāag pugē n ka tōe n yao- rēnd yēnda wakat ninga a sēn wat n tōog bala, a loetame; bala a tara padanga, baa ti Ramadaana yīib soabā sã n wa. La sã n mikame ti padang ka be ne-a, ti yaa padang bal la a maanda la yam kaalgo, rēnd wakat-kānga ka sōmb ne-a t'a

yaoolg Ramadaanã rolbo n tı tãag Ramadaan a yiib soabã ye, A Aaisa -Wënd yard be a yĩnga- a yeelame: no-loeerã samd mi n bee mam zugu, tı mam ka tōogd n yao-a ye, tı sã n ka Šaabaanã pugẽ.

Woto n kite, tı bee ne pug-kãngã t'a ges a mengẽ wã, sã n mikame tı padang ka be ne-a ad a tara zũnuubu, la yaa tilae ne-a t'a tuub n tug Wënd nengẽ, la a yãg n yao no-loeer ning sẽn be a zugã. La sã n mikame t'a tara padanga, rënd yell ka be a zug ye, baa tı noorã loeesã sã n yaoolg yuumde maa yuum a yiibu.

S20: Pagb sãnda, Ramadaan yiib soabã kēeda b zugu, tı bãmb rag n ka loe rasem-dãmb sãndã Ramadaan ning sẽn loogã ye, yaa bõe n zao bãmbã zugu?

L20: Sẽn yaa tilae n zao bãmba, yaa b tuub n leb Wënd nengẽ n bas tuum-kãngã, bala ka sõmb ne ned ning Ramadaan no-loeer rolb sẽn be a soab zugu, t'a yaoolg-a n tug n tãag Ramadaan a yiib soaba tı sã n ka tũ ne padang ye, sẽn tũ ne a Aaisa koεεgã-Wënd yard be a yĩnga- a yeelame, no-loeerã samb mi n bee mam zugu, tı mam ka tōogd n yao-a , tı sã n ka Šaabaanã pugẽ ye.

La woto wilgdame tı ka sõmb ne-a t'a yaoolg-a n tı moan Ramadaan a yiib soabã poorẽ ye, rënd yaa tilae ne-a t'a tuubi n tug Wënd nengẽ -A Naam yı wagell n zēke- n yi

kedgrã yě sĕn maanã, la a loe a noorã rasem-rãmb nins yě sĕn basã, Ramadaan a yiib soabã poorĕ.

S21: Pag sã n yã Pekre, wĩntoog wakat a yembrã sasa, tı yě yaool n na ka puus Zafare, rĕ yĩnga yaa tulae n zao ne-a t'a rol Puus-kãngã a sĕn wat n ylgã bu?

L21: Yõs-taab n be bãngdbã ne taab suka yel-kãngã zugu, kĕer yeelame tı ka tulae ne-a t'a yao Puus-kãngã ye, bala a ka maan yam yaal-yaal ye, a ka tar zunuub me ye, bala sakda ne-a t'a yaoolg Puusgã n tug n tãag wakatã baasgĕ n puuse. La kĕerã yeelame: tı yaa tulae ne-a t'a rol Puus-kãngã, ne Nabiyaamã - **Wĕnd puusg la A tulgr be a yĩnga-** koεgã a sĕn yeele: "**Ned ning sĕn paama Rakaar Puusgĕ, a soab paama Puusgã**".

La sĕn na yul t'a yam ra yo, yaa a yao-a, bala, a yaa Puus yenga, musak ka be a rolbã pugĕ.

S22: Pug soab sã n yã zum taoor t'a na n ka roge raar a yembre maa rasem a yiib pugĕ, rĕ yĩnga yě basda no-loerã la Puusgã zı-kãngã yĩnga bı yaa wãnã?

L22: Pekar soab sã n yã zum, taoor tı rogmã na n ka ta, ne raar a yembre, maa rasem a yiibu, la mikame tı lagema ne rogmã zabdem, rĕnda geendame tı yaa rogmã zum. A basda Puusgã la no-loerã a yĩnga, la sã n mikame tı

rogmã zabdem ka lageme, rënd a yaa zum sën sãame, koεg pa be a pugẽ ye, a ka gıdgd-a n yi no-loeer pa Puusgo.

S23: Fo nee wãn-wãnã, ned sën na n rık tı-biis nins sën gıdgd Pekrã, sën na yı l n lagem nebã n loe noorã?

L23: Mam bugıda pag fãa n yi yel-kãngã, bala tı-bi-kãensã, namsg wusg n be a pugẽ, mam bãnga yel-kãngã sën tũ ne logtoεembã sën togse. La d yeta pagã bala: wãndı yaa Wënd sën gulse n roglg a Adam koam pugli wã, bı f sek f meng ne bũmb ning Wënd sën guls n rogl foom, la f loe wakat ning gıdgr sën wat n ka be, la gıdgrã sã n wa bı f kao, tı yaa yardo ne bũmb ning Wënd sën kord n kō foomã, A Naam yı wagell n zēke.

S24. Paga, a rogmã zum kiuug a yiib loogr poorẽ, a sën yılgã poorẽ a lebg n yãta zı-tosdi kuds-kıdse, rē yĩnga a kaooda noore la a bas Puusgã? Bı a maanda wãn-wãnã?

L24: Pagbã zu-loeesã Pekrẽ wã la Rogm-zumẽ wã a yaa mogr sën ka tar kirenga, la sën be a sabab-rãmba pugẽ, yaa tı-biisã sën gıdgd pusã la sën gıdgd Pekrã rıkre, la nebã rag n ka mi yel-gĩtı-kãensã sën yaa wusgã zamaan sën da loog ye, Yaa sıd t'a yel-gĩtı wã ka bak n beẽ sën sung Nabiyaam -Wënd puusg la A tulgr be a yĩnga- tumsgã, sën pus n sung pagb belem tēka yel-kãngã beeme, la a tolg n

yaa wusg woto halı tı ninsaal yırb n ka mi a sēn yidg a yel-
gı̄tı wā, a lebga yell sēn sāamd sūuri. La ad zeng raoog sēn
kell n gūbg yel-kāngā pugē: yaa tı pag sā n yulge, n yā yulgr
ningā sēn tar bāng-n-wāakā, zem tı yaa hayd maa rogem
zumē -la mam sēn rat ne yulgrā haydē wā: yaa ruud peelgā
sēn na n yi, yē me yaa koom sēn yaa peelle tı pagbā mi-a-
rēnd būmb ning sēn be yulgrā poorē sēn yaa wala bendo,
maa rōodo, maa tosbo, maa maasre, wāndı fāa ka būmb
sēn yaa Pekr ye, rēnd a ka gıdgd Puusg ye, a ka gıdgd no-
loeere, a ka gıdgd tı raoa maan kēed-n-taar ne a pag ye;
bala a ka Pekr ye, a Ummu Aṭiya yeelame: Tōnd rag n
yuume Nabiyaam wakato, n ka geend rōodā, bı bendā
haydā poorē wā tı yaa baa fuı ye. Al-buḥaarı n togs-a, t'a
Abuu Daawud paase: "Yulgrā poorē". la hadiisā togsgā-
tikri manegame. Woto n kıt tı d yetē: būmb fāa sēn reng n
yi, yulgr ning poorē fo sēn tar bāng-n-wāak ne-a, sēn yaa
yel nins d sēn gomā, ad ka būmb sēn namsd pag ye, a ka
gıdgd a Puusg la a no-loeere, la a sıd kēed-n-taar ne-a ye,
la ad yaa tulae t'a ra yāg n yulge, halı t'a wa tug n yā yulgrā
zānga; bala pagba sānda, zumā sā n kuı bal la a sēn yāgd n
so taoor tı na n ka wāag zāng ye, Rē n kıt tı Şahaabsā
pagbā, b rag n tumdame tı kēng Muunim-rāmbā ma wā
nengē a Aaisa -Wēnd yard be a yīnga- lamdā, tı zum be
beenē, t'a Aaisa yet-ba: ra yāg-y ye, halı tı y wa tug n yā
bōn-pēelgā".

S25: Pagb sãndã, b zumã kell n tongdame n yita, tu wakat sãnda a wãagda raar a yembre maa rasem a yiibu, n lebg n le wa, wakat-kãngã, rënd a buud yaa wãn-wãnc alhaal-kãngã pugẽ sën këed ne No-loeerã la Puusgã la tũudum nins sën kellã fãa gilli?

L25: Bũmb ning b sën mi bãngdbã wusg nengẽ: yaa tu paga a sã n mikame t'a tara rasem-rãmb a sën mi, tu rasem-kãensã se, a soodame la a puuse, la a loe a noore, bũmb ninga a sën yãt rasem a yiibu maa rasem a tãab poorẽ wã, rë ka leb n yaa Pekar ye, bala sã n yaa ne bãngdb-kãensã nengẽ, yulgrã (pag zĩnd n ka yã hayd) a sën paood n yude, yaa rasem piig la a tãabo.

La bãngdbã sãnda yeelame t'a sën wat n yãnd zum wakat ning fãa, a yaa hayd bala, la wakat ninga a sën wat n wãaga a yaa yulgemde, baa tu hayd-rãmbã ne taab suk ka ta rasem piig la a tãabo.

S26: Bug la sõma n yud ne paga: yaa a sën na n puus Ramadaanã yundo a zakẽ wã, bi a sën na n puus miisrẽ wã, sën tug n yuda sã n mikame tu sagls la tãegr n be miisrẽ wã? La bõe la fo sagend pagb nins sën puusd miisã wã pugẽ wã?

L26: Sõma sën yud ne paga yaa a puus a zakẽ, ne Nabiyaamã -Wënd puusg la A tulgr be a yinga- koεεga sën

gūbge: "Pagbã zãgsẽ Puusg n sōmb n yuda", Sēn leb n paase, pagbã yiibã a ka būmb sēn tulg n yi yel ye, halhaal-rãmb wusg fãa pugẽ, rēnd pag pa a zakẽ wã, yēnda la sōma ne-a n yud a sēn na n yi n kēng Puusg miisrẽ wã. La sã n yaa ne saglsã la goama, a tõeeme n paam rēnda a zakẽ wã sēn tũ ne wala kaset-rãmba.

La sã n yaa mam toglg ne pagb nins sēn puusd miisã wã pugẽ wã: yaa b yi b zagsẽ wã tũ b yaa sēn ka vēnegd b nag-teedã ye, n leb n ka ningd yũ-nood ye.

S27: Rub lemb n ges Ramadaana wīntoogo ne pag sēn loe noorã, a buud yaa wãn-wãna?

L27: A buudo: yell ka be ye; tulsemã sēn be beenẽ wã yīnga, la a tubsda būmb ninga a sēn lembã.

S28: Pag sēn na n paam fãoobo, la mikame tũ yaa a sēn na kēed puga, tũ pugã yi sēn tũ ni zuma yiib wusgã, rē yīnga sakda ne-a t'a kao, bũ a kelledame n tong a no-loeerã bala? La a sã n kao zunuub n rog a zug bu?

L28: D yetame: ad pug soab ka yãt Pekar ye, wala lumaam Ahmad sēn yeelã: tũ pagbã bāngda pug kōom ne haydã wãagre. La hayd me -yaa wala bāngdbã sēn yeelã, Wēnde -A Naam yũ wagell n zēke- A naan-a lame - tũ yaa biigo rubo

a sēn wat n be a ma wā pugē wā, rēnd pugā sā n kē la Pēkrā sēn wāagde.

La pagb sānda Pēkrā tōeeme n kell n be ne-a wala a sēn da minim n yāt-a taor t'a na n ka rīk pugā, rēnd pug-kāngā soaba b buudame t'a Pēkrā yaa sīd beeme; bala Pēkrā kell n kēngda ne yēnda, pugā ka gīdg-a ye, tī hayd-kāngā gīgdg yēnda n yī hayd buud fāa sēn gīgdgā, n leb n lubd būmb ning hayd buud fāa sēn lubdā.

La sēn be beenē: yaa tī zum ning sēn yit pug soab nengē wā a yaa kōbg a yīibu:

- Kōbgo b sēn buud t'a yaa pekre, la yē soaba la sēn kell n tong ne-a bala wala a yalē wā sēn da yaa a soabā taor t'a na n ka rīk pugā, yēnda vōor rat n na n yeelame tī ad pugā ka tiis-a ye, rēnd a yīta Pekre.

- La kōbg a yīibā: yaa zum sēn ling n wa, maa tī yaa wala fāoob sababo, maa yaa zub zēkre, maa a yīi būmb zug n lu la sēn wōnd rēnda, rēnd pug-kāngā zuma a ka Pēkr zum ye, la ad rēnda yaa bāag zum. Rē ying n kit tī zī-kāngā ka gīgdg-a n yī Puusg ye, ka no-loeer me ye, la a naaga pagb nins sēn pa tar Pēkrā buud pugē.

La sā n mikame tī fāoobā kitame tī biigā kell n yī maa a pugā, rēnd wakat-kāngā yīta wala bāngdbā sēn yeelā:

biigã sã n yiime, tu mikame tu ninsaal naandã vënegame, rënd zum ning sën yit biigã yiib poorẽ wã yaa rogem zum, a basda Puusgo la no-loeere, a sidã me zãagd-a lame halu t'a tug n yilge.

La biigã sã n yiime, t'a na n ka naan ye, rënd zumã ka geend tu yaa Rogem zum ye, ad yaa zı-yooko, a ka gidgd a Puusgo, ka gidgd a no-loeere, ka zëng sën ka rënda.

Bãngdbã yeelame: la wakat sën paood n yud tu b tõe n bãng t'a lebga naande: yaa rasem pis-nii la a yembre; bala biiga a ma wã pugẽ yaa wala Abdullah [bn Mas'ud sën yeelã, Wënd yard be a yĩnga: Wënd Tën-tuum yësa tõndo - **Wënd puusg la A tulgr be a yĩnga-** yënda me la sid soaba b sën kõt a soab goam sidã, a yeelame: «ad yãmb yembr fãa, b tigimda a naanegã, a ma wã pugẽ rasem pis-naase t'a yaa mani, rë poorẽ a yita zı-pelle woto buudo, rë poorẽ t'a yı nem gilgu woto buud yesa, rë poorẽ tu b tums malek a nengẽ, n sagl malekã ne goam a naase: t'a guls a rtlã, la a vumã teka, la a tuumã, la a yaa zu-beed ned maa zu-no neda», rënd a ka tõe n yı naande, taor tu rë na n ka ta ye, la naor wusgo, yaa tu naanegã ka vënegde, taor tu rasem pis-wae ka ta ye. wala bãngdbã sãndã sën yeelã.

S29: Mam yaa paga, mam pugã luu a kiuug a tãabo, hal yuum sën looge, la mam ka pouse halu tu zumã wa tug n

kupi, la b yeela maam tu mam rag n sōmb n puusame, rēnd yaa bōe la mam maand masa, la mam ka mi rasem-rāmbā mam sēn basa toaag ye?

L29: Būmb ning b sēn mi, bāngdbā nengē: yaa tu paga, a pugā sā n luu kiuuk a tāabo a ka puusd ye; bala pug sā n luu kiuug a tāabo, mikdame tu biigā naanegā paam n vēnegame, rēnd zum ning sēn yit beenē wā, yaa rogem zum, a ka sōmb n puus ye.

Bāngdbā yeelame: la tōeeme n bāng naanegā vūuni t'a sā n pid rasem pis-nii la a yembre, la mikdame tu woto yaa sēn paood n ka ta kiuug a tāab ye, rēnd yē sā n tar bāng-n-wāaka t'a luu a kiuug a tāabē wā, rēnd būmb ning sēn paam-a wā yaa rogem zum, a sōmb n basa Puusgā a yīnga.

La pag ning sēn sokda woto wā, sōmba ne-a t'a tags n tēeg a mengē wā, sā n mikame tu biigā luume taoor tu rasem pis-nii wā ka ta, a ronda Puusg ninsā a sēn basā, la sā n mikame t'a ka mi a sēn basā sōore? Rēnd a magdame bala, n maan a pāng tōog teka, n yao būmb ningā yēnda tēebā sēn wa n tug n wili n yud tu yē pa puus-a ye.

S30: Paga n sokde: tu no-loeer sēn lebg tilae yē zug teka, yēnd loeta Ramadaanā, la a ka yaood rasem nins a sēn da basd Pekrā yīnga ye, sēn paasde, yē ka mi rasem-

rāmb nins yě sēn da kao wā ye, tı yě sokdē, tı b toglg-a būmb ning a sēn sōmb n maan masa.

L30: Sāamda tōnd sūuri, tı yel-kāngā wa tug n yı sūd-kōt pogsā suka, a sēn bas būmb ning sēn yaa tilae ne-a wā, sēn yaa no-loeerā, maa tı yaa zulem maa yam-kaalem, la a yībā fāa gill yaa yelle, bala zulmā yě tumā yaa bāngr la sokre, La sā n yaa yam-kaalegā yēnda tumā yaa Wēnd zoεεga -A naam yı wagell n zēke- la Wēnd gūusgu, la A stbgrā yεεsgo, la yāg n kēng Wēnd yardā sēn be būmb ning pugē.

Rēnd sōmbame tı pug-kāngā, t'a tuub n leb Wēnd nengē, ne būmb ning yě sēn maanq, la a kos yaafa, la a gūus rasem-rāmb nins yě sēn basā, n yao-b a pāng tōog teka, a sā n maan woto rokda a zugu, lq d tēedame tı Wēnd na n reega a tuubgā.

S31: Pag sā n yā a Pēkrā Puusgā wakat sēn ta poorē a buud yaa wān-wānq? La rē yīnga yaa tilae n rog a zug t'a rol-a bu t'a sā n wa yulge? Woto bala, a sā n yulg tı Puusgā wakat na n ka yi, yě me buud yaa wān-wānq?

L31: Rēnem: pag sā n yā Pekre, wakatā sēn ta poorē, rat n yeel tı Puusgā wakat kōom poorē, yaa tilae ne-a, t'a sā n wa yulge, bu a rol Puus-kāngā, t'a sā n rag ka puus-a taoor tı Pēkrā na n ka wa a nengē ye, La rēnda yaa Tēn-

tuumã koεεg sēn yeele -puusg la tilgr be a yīnga-: « Ned ning sēn paama Rakaar α yembr Puusgē, a soab paama Puusgã», Rēnd pag sã n paam puusga wakat sēn zems rakaar teka, rē poorē t'a pekrã wa taoor t'a na n ka puuse, a sã n wa yulge, yaa tilae t'a role. Yiibu: a sã n yulg n yi Pekarã taoor ti Puusgã wakat na n ka yi, yaa tilae n zao ne-a t'a yao Puus-kānga, rēnd a sã n yulge, taoor ti wīndgã na n ka puki, sēn ta wala Rakaar Puusgo, Fagirã Puusg rolb yaa tilae n zao-a, la α sã n yulge, taoor ti wīndgã na n ka lu, sēn zems Rakaar Puusgo, Laasarã Puusg yaa tilae n zao a zugu, la α sã n yulge, taoor ti yun-suka na n ka ta, sēn zems Rakaar Puusgo, Sāafã Puusg yaa tilae n zao a zugu, la a sã n yulg yun-suka loogr poorē, Sāafã Puusg ka tilae n zao-a ye, la sēn be ne-a yaa a puus Fagirã, t'a wakatã sã n wa ta, Wēnd yeelame A Naam zēkame:

﴿فَإِذَا فَضَيْتُمُ الصَّلَاةَ فَادْكُرُوا اللَّهَ قِيَمًا وَرَفْعًا وَعَلَىٰ جُنُوبِكُمْ فَإِذَا
 أَظْمَأْنَنْتُمْ فَأَقِيمُوا الصَّلَاةَ إِنَّ الصَّلَاةَ كَانَتْ عَلَى الْمُؤْمِنِينَ كِتَابًا
 مَّوْقُوتًا﴾ [النساء: 103]

{La y sã n paam yīn-yōgnego bi y yānes turg ne Puusgã, ad Puusgã yume n yaa tilae n yāk waka ti rog sid-kōtba zugu} [Suurat Annisaa: 103] Rat n yeele: ti yaa faril sēn yāk wakat n tar toaaga, ka sōmb ne ninsaala t'a yiis Puusgã a

wakatē wā ye, a ka sōmb n sing-a taor t'a wakatā me ka ta ye.

S32: Mam kiuugā (Pekrā) waame Puusgā wakato, m maanda a wānā, la rē yīnga m ronda Puusgā haydā rasem-rāmbā zāng bu?

L32: Haydā sā n sigi, Puusgā wakat sēn kē poorē, wala a sēn na n yā Pekrā wīntoogā sēn gōbg poorē n zemes wala wakata (læere) pusuk bilgri, rēnd yēnda sēn wat n ylg n yi haydā, a ronda Puusg ninga wakatā sēn kē tu yēnda yaa yulgemdā; Ne A koεeg sēn yeele A Naam zēkame:

﴿... إِنَّ الصَّلَاةَ كَانَتْ عَلَى الْمُؤْمِنِينَ كِتَابًا مَّوْقُوتًا﴾ [النساء: 103]

{ ad Puusgā yume, Muumin-rāmbā zugu, n yaa wakat sēn yāk toaaga } [Suuratu Annisaa: 103] La a ka rond haydā wakat Puusgā ye, ne Nabiyaamā koεeg sēn yeele -Wēnd puusg la A tulgr be a yīnga- hadiis wokā pugē: «Rē yīnga a sā n yā haydā a ka basd Puusgā la no-loeerā laa?» La bāngdbā tigma taaba t'a ka rond Puusg ninga sēn pōs-a a Pekrā wakat-rāmbē wā ye. La a sā n ylgē, tu wakatā ket n zems wala Rakaare, maa yud rēnda, ad a puusda wakat-kāngā a sēn ylg a pugē wā, ne a koεeg sēn yeele, Wēnd puusg la A tulgr be a yīnga: "sēn paam a Rakaar Laasare, taor tu wīndga na n pa lu, sid la hakuka a soab paama Laasare", Rēnd a sā n ylg Laasar wakato, maa taor tu

wĩndgã na n ka puki, ti sēn kell ti wĩndgã lu wã, maa a pukrã kella Rakaar a yembre, rēnd a puusda Laasarã la Fagirã rēnem masaallã, la Fagirã a yembre yiibē soab masaallã.

S33: Mam tara m ma, a taa yuum pis-yoob la a nu, la taa yuum piig la a wae a sēn ka rog ye, la masã zum n yit a nengē sēn na maan yuum a tãabo, la -wōnda- bãaga a waa mam sēn togs yãmb wakat ningã pugē, la a sēn kēed no-loeerã, yãmb sagand-a ne bōe, la a buud maanda wãn-wãnã?

L33: Pug-kãngã puudu zumã sēn paam-a woto wã, a buudã: yaa a bas Puusgã la no-loeerã a sēn da minim yãt a kiuugã rasem-kãensã sōorã, a sēn da sing n yãt taor ti yel-kãngã na n ka paam-a wã, rēnd sã n da mikame ti yē sēn minima, yaa ti Pekrã wata kiuug fãa sungrē, n wogl rasem a yoob bilgri buudu, rēnd a zĩndida kiuug fãa sungr rasem a yoobe, n ka puusdē la a ka loetē, ti rasem a yoobã sã n wa sɛ bi a so koom la a puuse la a loe noorã.

La Puusgã sēn yit to-to ne pug-kãngã la a taabã: yaa t'a pekda a taorã pekr tekē, n wēk-a, la a yōk koom, a maanda woto farilã Puusg wakat sēn wat n kē, la woto bala la a maanda, t'a sã n rat n na n maan naafila sēn pa farila wakato.

La halhaal-kāngā pugē -la toog a zugā yīngā- sakda ne-a t'a tigim Zafarā ne Laansarā taaba, la Magribā ne Sāafā taaba; sēn na yīlē t'a tuumdā kell n yi tuum yende n tigim Puosg a yiibu: Zafarā ne Laansarā. Ti yulgr a yembrā me yi ne Puosg a yiibu: Magribā ne Saanfā, la yulgr a yembre ne Fagirā Puosgā, t'a sēn da na n maan rē naoor a nu wā, a maand-a la naoor a tāab bala. Mam lebgdame n yetē, a sã n wa rat n na n yulge, a pekda a taorā, n yēes-a ne kudga maa sēn wōnd rē, halu ti sēn yitā wēke, rē poorē t'a yōk koom, a puus Zafarā rakaar a naase, Laasarā rakaar a naase, Magribā rakaar a tāabo, Sāafā rakaar a naase, Fagirā rakaar a yiibu, rat n na n yeele: t'a ka koeegd Puosgā wala sāndā sēn tēedā ye. La sakda ne-a t'a tigim Puosg a yibā, Zafarā ne Laasarā, la Magribā ne Sāafā, Zafarā ne Laasarā maa t'a yaoolg-ba n tug n puus Laasarā wakato, maa a reng n puus-ba Zafarā wakato, woto me la Magribā ne Sāafa, maa t'a luus taoore maa t'a yaoolg-ba, la a sã n rat n na n maan Naafula ne ko-yōk-kāngā yell ka be a zug ye.

S34: Pag sēn na n be Mak Lohorem miisrē wā, n yaool n yaa hayd soaba, n rat n na n kelg hadiis-rāmba la Hutb-rāmba, a buud yaa wān-wāna?

L34: Ka sōmb ne paga sēn tar Pekre t'a zīnd Mak Lohorem miisrē wā la zēng sēn ka be, sēn yaa miisā-rāmbā

pusē, la sakda ne-a t'a puug Miisrē, n ruk būmb a pugē la sēn wōnd rēnda, wala Nabiyaamā -Wēnd puusg la A tulgr be a yīnga- sēn yeel a Aausa, a sēn wa n sagl-a t'a ruk ḥamrā¹(pīirā) n wa, t'a yeele: " ad a bee miisrē wā, la mam tara Pekre ".Tū Nabiyaama yeele: « ad fo haydā pa be f nugē wā ye », Rēnd hayd soab sā n puug miisrē, n tar bas-m-yam tū zumā ka na n tos miisrē wā, yell ka be ye.

La a sā n rat n na n kē n zīndi rē ka sakd ye.

La yē daliili: yaa tū Nabiyaamā -Wēnd puusg la A tulgr be a yīnga- sagla pagba tigra Puusgē, tū b yi n kēng Puus zεεgē wā (Pug-sādbā, la kom-pug-bāanegā sēn zoet yāndā, la haydā rāmbā,) la a sagl-b lame tū b bak n bas Puus zεεgā, Tū rēnda wilgdame tū Pēkr soaba ka sōmb ne-a t'a kaoos miisr pugē ye, n na n kelg goama, maa kareng la hadiis-rāmb kelgre.

¹ ḥamr (Pīirā): yē la tapū wā bala, puusd sēn tiuud a soab zugā, la b pud-a lame tū ḥamr (Pīiri), bala a pinda nengā.

Sēn be Haydã yulgr buud-rãmb pugē Puusgē wã

S35: Rē yīnga, koom ning sēn yit pag nengē wã -zem t'a yaa peelle maa yaa rōodo- a yaa yulgemd bi a yaa rēgdo? La rē yīnga koom-yōkr yaa tulae a pugē bi, la y bāng t'a yita wakat fãa? la a buudã yita a bōe t'a sã n wat la a wãagdē, sēn tug n yuda yaa ti pagba wusg fãa - sēn ti welge karembã- b neeme ti rēnda yaa maasr bala, koom yōgb ka tulae a pugē ye?

L35: Mam yãdb pēsog poorē, yaa ti koom ning sēn yit pagē wã, sã n mikame t'a ka yit ruud-kiuugē wã, la yaa rogsē wã la a yita, yēnda yaa yulgemde, la ad a kaood koom baa t'a sã n yaa yulgemde; bala ka sart ti bũmb ning sēn kaood koom yōkrã yu rēgd ye, ad pemsmã sēn yit poorē wã, n ka tar gãdb ye, la ne rē fãa gilli a kaooda koom.

Woto yīnga, sã n mikame t'a yii pag nengē n mik t'a tara koom, rēnd a koomã kaoodame, la zao ne-a t'a palmes-a.

La sã n mikame ti yaa sēn tongde, rēnd a ka kaood koom ye, la a yōgda koom wakat fãa gilli, ti Puusgã sã n ta, la a puusda wakat ninga a sēn yōg koomã faril-rãmba la naaful-rãmba, la a karem Alkurãana, la a maan bũmb ning

a sēn tull fāa, sēn sakd Šari wā pugā, Wala bāngdbā sēn yeel woto buudu ne ned ning sēn tara ruud ko-yondo, wāndı la bōn-yiti wā buudo ylgemdā wεengē, rēnd a yaa yulgemde, la sā n yaa ne koomā kaoob wεengē, a yaa būmb sēn kaood koom, sā n ka mikame t'a yita wakat fāa, rēnd sā n mikame t'a yita wakat fāa, a ka kaood koom ye, la sōmba ne paga t'a ra yōk koom n na n puuse rēndame tı yaa Puusgā wakat sēn kē poorē, la a sēb sōma.

La sā n mikame t'a wāagdame, la yē rag n minimame t'a wāagda Puusgā wakato, rēnd yē yaoonda Puusgā n tug n ta wakat ninga a sēn wāagda, t'a sā n ka yeεsd tı wakatā na n wa yiime, la a sā n yeεs wakatā yiibu rēnd a yōkda koomā, la a maneg n sēb sōma n puuse.

La welgr ka be a sēn yaa bilf ne a sēn yaa wusg ye, bala a fāa gill yaa būmb sēn yit beenē, rēnd a bilfā la a wusgā kaooda koom, la rē yōsga ne sēn yit yīngā zīs sēn kellā wala zuma la wubrā, yēnda pa kaood koom ye, bāmb ka kaood koom ye, ka a bilfu ka a wusg me.

La sā n yaa pagbā sānda sēn tēed t'a ka kaood koomā, mam ka mi yēnda yēgra ye, sā n ka gomd sēn yi a [bn Hazam nengē- Wēnd na yols-a- bala yē yetame t'a ka kaood koom ye. la ad a ka togs dalill a gomda zug ye, la sā

n mikame t'a ra tara dalil Alkurāanē wā maa Sunnē wā maa Şahaabsā goamē, yēnda rag n na yi daliili.

La sōmba ne paga t'a zoe Wēnde, la a gūus a yulgrā, bala Puusg ka reegde ti ka tū ne yulgr ye baa t'a sā n puus naoor koabga, pus n ka woto ye, bāngdbā sānda mens yeelame: ti ned ning sēn puusda ti ka tū ne yulgre a kɩflame, bala yāwā bee Wēnd Aayae-rāmba yaalg pugē A Naam yu wagelle n zēke.

S36: Pag ning koomā sēn yit a nengē, sā n yōk n na n puus farila, rē yīnga sakda ne-a t'a puus a sēn tull fāa sēn yaa naafil-rāmba maa Alkurāan karengo, ne farilā koomā yōgbo n tug n tāag faril a yiib soaba bu?

L36: A sā n yōke, n na n puus farilā wakatā sungrē, rēnd a tōeeme n puus a sēn tull fāa sēn yaa faril-rāmba la naafil-rāmba la Alkurāan karengo, halu n tug n tāag Puusg a to wā wakat sēn na n ta.

S37: La rē yīnga, sakda ne pug-kāng t'a puus Luhaa wā ne Fagirā koom bu?

L37: Ka sakd ye, bala Duhaa wā Puusg yaa būmb sēn yāk wakato, rēnd yaa tulae t'a yōk koom a yīnga, a wakatā sēn wat n ta wā poorē; bala a buudā yaa wala kaadg soab

budo, Nabiyaama -Wënd puusg la A tulgr be a yīnga-sagla kaadgā soaba t'a yōk koom t'a sā n na n puus fāa.

La Zafarā wakato, yaa wīntoogā sēn wat n gōbge, n na n tug n tāag Laasarā wakato.

La Laasarā wakato: yaa Zafarā wakat sēn wat n yi, halu n tug n tāag wīntoogā sēn wat n lebg rōodo, la a tlae wā (.Ḍaruurā) yaa sēn na n tāag wīntoogā luuse.

La Magribā wakato: yaa sēn na n sung wīndgā luuse n tug n tāag sawat-miuudā lillgu.

La Sāafā wakato: yaa sēn na n sung sawat miuudā lillgu n tug n tāag yungā pusuka.

S38: Rē yīnga pug-kāngā tōeeme n maan Naafil-rāmba tu yungā pusuk sā n looge, ne Sāafā koom bu?

L38: Ayo, yungā pusuk sā n loog n se, yaa tlae ne-a t'a lebg n palems a koomā yōgbā, la koεeg n yeele, tu ka tlae n rog ne-a t'a palms a koomā ye, la gomd-kānga n wil n yuda.

S39: Sāafā Puusg wakatā a tekā yaa ye? La d bāngd-a la wān-wāna?

L39: Sāafā wakatā baasgo, yaa yun-suka, la b bāngda rēnda tu fo sā n puu wīndgā luuse n tug n tāag Fagirā pukri

zīis a yiibu, rēnd rēenem pusukā Sāafa wakat sata beenē, tu kell yungā pusuk a to wā yēnda me ka Sāaf wakat ye, yēnda yaa wakat luundg sēn be Sāafā ne Fagirā suka.

S40: Pag ning koomā sēn yit a nengē wā, n wāagd la a watē wā a sã yōk koom, la a sēn sa koomā yōkrā, la taoor t'a na n ka puusā a leb n sigame yesa, yaa bōe la a maanda?

L40: Sã n mikame tu yaa sēn wāagd la watē, a yalsdame n kolle, halu tu wāagrā wakat wa ta, t'a yaool n yōk koomā n puuse, la sã n mikame t'a ka tar yelē sēn yaa vēnega, tu wakat ning t'a sigda la wakat ning t'a ka sigda, rēnd yēnda yōkda kooma Puusgā wakat sã n wa ta bala n puuse, la yell ka be a zug ye.

S41: Yaa bōe n sōmb n maane ne būmb ning sēn bond yīngā maa futā sēn yi ko-kāgā?

L41: Sã n mikame t'a yaa yulgemde, rēnd baa fu ka rog a zug ye, la sã n mikame t'a yaa rēgdo - yē me la sēn yit ruudmā zīigē wā- rēnd yē soaba a yaa tulae ne-a t'a pek-a

S42: La kooma yōkrā tu ko-kāngā sã n yi a nengē wā, rē yīnga sekdame t'a pek koomā yōbgā yīn-wilā bal bu?

L42: N-ye, woto sekdame ti sã n mikame ti yaa bõn-
yulemde, yẽ me la bũmb ning sãn yit rogsẽndẽ wã, ka sãn
yit ruudmã zĩigẽ ye.

S43: Yaa bõe sabab n kut ti hadiis ka wa n yi Tẽn-tuuma
nengẽ -Wënd puusg la A tulgr be a yĩnga- n wilgd ti ko-
kãensã sãn yit pagbẽ wã a kaooda koom, n lagem ne
Şahaab pogsã rag n yume tar yã-beedo ne dĩina yel
sogsgo?

L43: Bala, ko-kãngã a ka yit pag fãa nengẽ ye. **S44:** La
pag ning sãn da pa yõkd-kooma; a sãn zi buudã yĩnga,
wakat-kãngã bõe n be a zugu?

L44: Sãn be a ne-a, yaa a tuubi n leb Wënd nengẽ A
Naam yu wagell n zẽke, la a sok bãngdbã ne yel-kãnga.

S45: Neb n be beenẽ n yetẽ ti fo yeelame ti ned ka
sõmb n yõg-koom ti ko-kãngã sã n yi a nengẽ?

L45: Ned ning sãn yeel ti mam yeela koε-kãngã wã, a ka
sɪd soab ye, la yĩngr-yĩngri, yaa wala a fasma mam sãn
yeele: t'a yaa yulgemdã. ti yaa a ka kaooda koom.

S46: Ko-bend ning sãn yit pag nengẽ taoor ti haydã na
n ka wa wã ne raar a yembre maa sãn yud rẽnda maa
sãn ka ta rẽ wã a buudã yaa wãn-wãna, la sãn yita wã a
tõe n yu wala Gĩsg sãn yaa bãanega n yaa sabelle maa

miuug-miuugu maa sēn wōnd rē? La a buudā yaa wān-wāna ti sã n mikame ti yaa haydã sɛɛb poorē?

L46: Sã n mikame ti yaa haydã tagmas-rãmba rēnd a yaa hayde, la b bāngda rēnda zabdmē wã, la pendã gãdbã sēn minim n wat pekr soab nengē wã.

La sã n yaa ko-bendã haydã poorã, a gūudame halu t'a wa tug n sɛ; bala ko-bend ning sēn kell n tōkda ne haydã yē me yaa hayd bala; ne a Aalsa koɛɛgã -Wēnd yard be a yīnga- a sēn yeele: ra yāg-y, halu ti y wa yã gīs pɛɛlgã. La Wēnd n yud ne minim.

Pekrã buud-rãmb sãnda hagiimdē wã la Umra wã maanegē.

S47: Hayd soab puusda [hraamã rıkr rakaar a yiibã wān-wāna? La rē yīnga sakda ne pag sēn tar Pekre, t'a yulemd Alkurāanã karengo ne solegre, bı ka sakde?

L47: Rēnem: sōmbame ti d bāng ti [hraamã rıkrã a ka tar Puusg ye; bala ka wa sēn yi Nabiyaama nengē t'a maaname ti yaa Šari ne a poorē rãmba ti b puus [hraamã rıkr yīng ye, ka ne a koɛɛga, pa ne a tuumde, leb n ka ne a sakr me (b sēn maan t'a yã la a sīnda). Yiibu: yaa ti pug-kāngã sēn yã a Pekrã taoor t'a na n ka rık [hraamã, sakda ne-a t'a rık a [hraamã t'a yaa Hayd soaba; Bala Nabiyaamã

-Wënd puusg la A tulgr be a yīnga- a sagla a Asmaa Bintu Umay, sēn yaa seena a Abuubakar pagā -Wënd yard be b yiibā yīnga- a sēn wa n rog n yā rogmā zum Zul Hulayfat zīigē wā, Nabiyaamā sagl-a lame t'a so koom la a sēbg ne fuugu, la a maan a [hraamā, woto bal me la Pekar soaba, la a kelld n paa a [hraamā puga halu n wa tug n yulge, rē poorē t'a yaool n gilg Roogā, la a kēn Safaa la Marwaa suka.

La sā n yaa a sēn yeel sokrā pugē wā: la rē yīnga sakda ne-a t'a karem Alkurāanā? (D yetedame) N-ye, Pekar soab tōeeme n karem Alkurāana tulsem wakato maa sā n mikame ti yaa raab n be beenē, la sā n ka tū ne raab maa tulsem, ti yaa a sēn rat bala n karem ti yaa Wënd tūudum la yel-sōmd baobo la Wënd pēnegre, sōma sēn yude yaa t'a ra karem ye.

S48: Pag sēn na n bob n kēng hagiimdā, t'a Pekar wa sēn ta wala rasem a nu a sēn bobā poorē, la a sēn wa n tug n ta hagiimdā rukr zīigē wā a soo koom n maan Anniyā n yeelg [hraamā n kē hagiimdā pugē, la yē na n ka yulg n yi a Pekar ye, la ad a sēn wa n tug n ta Makā a kellama n be Harmā (Mak lohorma zīigē) yunga, a ka maan baa fuu sēn yaa hagiimdā maa Umrā wā tuum ye, la a paa rasem a yiib Minah, rē poorē la a yulgame, n maneg n so koom, n yaool n maan Umrā wā tuumā fāa gill t'a

yaa yulgemde, rē poorē zumā lebg n waa-a lame la mikame t'a bee hagiimdā Tawaaf Al-ıfaadā wā pugē, la a zoe yānde n kell n pids a hagiimdā tuuma, la a ka togs a zu-soabā sā n ka a sēn wa n lebg n ta a tēngē wā, yē soab buud yaa wān-wāna?

L48: Yāwā buudo: yaa ti zum ning sēn paam-a t'a be Tawaaf baasdgē wā (Al-ıfaada), sā n mikame ti yaa hayd zum yē mengā sēn mi ne a yalē wā la a zabdma rēnd Tawaaf-kāngā ka maneg ye, yaa tulae ne-a t'a lebg n wa Maka; n wa maan Tawaaf Al-ıfaadā wā, rēnd a watame n ruk a Anniyā ne Umra wā n yeelg [hraama a rukrā zīgē, n maan Umrā wā ne Tawaafe la a kēn Safaa la Marwa, la a wōrs a zoobdā, rē poorē t'a lebg n maan Tawaaf Al-ıfaadā wā.

La sā n mikame ti ka hayd zum, ti yaa zi-zaalem ning b sēn mi wā, la ad yiime sēn tū ne sēdgrā la rabeem maa sēn wōnd rē, rēnd a Tawaafā manegame neb nins sēn ka maand yulgrā t'a yaa sart Tawaafa maanegē wā.

La a sā n ka tōe n lebg n wa rēnem masaallē wā, ne sēn mik t'a tēngā zaramē, rēnd a hagiimdā manegame; bala a ka tōe sēn yud a sēn maan-a ye.

S49: Paga sēn na n ruk [hraam n na n maan Umra, la a sēn wa n ta Makā la a sēn yā a Pekrā, la a wali wā (zu-

soaba), bũmb n wa tu yaa tɫae t'a bobbe tuul-tuulle, la pagã ka leb n tar ned Mak ye, yẽ buud yaa wãna?

L49: Pagã tũud-a lame n bobbe, la a kell n pa a [hraamã pugẽ, rẽ poorẽ bi a lebgd n wa t'a sã n wa yulge, la woto yaa sãn na n mik t'a bee Mak soolmẽ wã (Arabi saoodi), bala lebgrã yaa naana, yaams ka be beenẽ ye, a ka baood paaspaoore la sãn wõnd rẽnda.

La sã n mikame tu yaa tẽn-zẽng neda, tu lebg n wa wã yaa toog ne-a, rënd yẽ kelledame n sẽb sõma, n maan Tawaafã la a kẽn Safaa la Marwa, la a wõrs a zoobdã, n sɛɛs a Umrã so-toak-kãnga pugẽ; bala a Tawaafã wakat-kãngã yaa bũmb sãn lebg tɫae, yel nins sãn yaa tɫae wã me sã n wa b yɫta sababo tu yel nins sãn ka sakdã sakd wakat-kãnga.

S50: Pag ning sãn yãa hayd a hagiimdã rasem-rãmb pugẽ wã, rẽ yĩnga hagiimd-kãngã sekd-a lame bu?

L50: Sok-kãngã ka tõe n loeke, rëndame tu b bãng a sãn yã a Pekrã wakat ningã, bala hagiimdã tuum sãndã menga hayd ka gɫgd-b ye, la tuum sãnda hayd gɫgd-b lame, rënd wala Tawaafã a ka sõmb n maan-a rëndame t'a yaa yulgemde, la zẽng sãn ka yɫ ne rẽnda sãn yaa hagiimdã tuuma a tõeeme n maane n lagem ne haydã fãa.

S51: Mam maana hagiimdã yuum ning sën loogã wã, mam maana hagiimdã tuum fãa gilli sã n ka Tawaaf Al-**[faada wã bala la Tawaaf Al-wadaa'wã (Wënd-na wat-ne Tawaafã), bala padang sën yaa Šari wã sën kō sore n gɔdɔg maam tɪ m ka tōog n maan b yiiba ye, la mam lebg n kēnga m yirã Madiina tɪ m na wa n bao raar ning n wa; n maan Tawaaf Al-[faadã wã la Tawaaf Al-wadaa'wã (Wënd-na wat-ne Tawaafã), la mam sën zɪ dīinã yelã yīnga mam tolame n yi [hraamã pugē, n maan būmbã fãa gilli [hraamã sën gɔdɔg yel ninsã, la mam sokame mam sën na n lebg n wa maan Tawaafã, Tɪ b yeel maam: tɪ mam ka tōe n lebg n wa maan Tawaafã ye, tɪ bala mam sãam-a lame, la yaa tulae n rog mam zugu tɪ mam yulm hagiimdã yesa yuum sën wate, n lagm ne naaf kuub maa yugemde, la rē yīnga wānde yaa sɪda? Bɪ yīib zīig a to n be? La rē yīnga mam hagiimdã sãamame? Rē yīnga yaa tulae tɪ m lebg n yulm-a? Kō-y maam kibar ne būmb ninga mam sën sōmb n maane, Wënd na maan-y barka.**

L51: Woto me yaa baollog sën paam nebã sën tũ ne neb nins sën maand fatwa tɪ ka tũ ne bāngrã, la foom halhaal-kāngã pugē fo sōmbame n lebg n tug Maka, n tug n maan Tawaaf Al-**[faada wã bala. La sã n yaa ne Wënd na wat ne Tawaafã bāng t'a ka rog fo zug ye sën mik tɪ fo rag n tara Pekrã fo sën wa n na n yi Mak wakatã, bala hayd soaba ka**

tilae ne-a t'a maan Wënd na wat ne Tawaafa ye; ne a [bn Abbaas hadiisã -Wënd yard be b yiibã yĩnga- sën yeele: ti b sagla nebã ti b modg ti b yel baasdga yɪ ne Roogã, la ad b yolsa yel-kãngã ne Pekar soaba. La waa togsg a to a Abuud Daawud nengẽ: ti b modg ti b baasgã yɪ Roogã gilgri. Sën paasde yaa ti Nabiyaamã -Wënd puusg la A tulgr be a yĩnga- b sën wa n togs-a t'a Saftyyat paam n maana Tawaaf Al-[faada wã, la a tara haydã, a yeel-b lame: "bɪ y sēb tɪ d loog wɛ". Tɪ woto wilgdē tɪ Tawaaf Al-wadaa'ã a lutame n bas pekr soaba. La sã n yaa ne Tawaaf Al-ɪfaadã wã, yaa tilae tɪ fo maan-a, la sën mik tɪ fo yii [hraamã pugē wã n paam n maan bũmbã fãa gillã tɪ f yaa zɪtã, rënd yell ka be ye; bala zɪt ning sën maana bũmb sën yaa hagiimdã sën gɪgd yel ninsã yell ka be a zug ye; ne Wënd koεgã sën yeele:

﴿... رَبَّنَا لَا تُؤَاخِذْنَا إِنْ نَسِينَا أَوْ أَخْطَأْنَا...﴾ [البقرة: 286]

{D Soaba Wënde ra yök-do tɪ d sã n yĩmi maa d tudgame ye} [Al-bakara: 286], Tɪ Wënd yeele A Naam zëkame: «M maaname»,. La A koεga sën yeele:

﴿...لَيْسَ عَلَيْكُمْ جُنَاحٌ فِيمَا أَخْطَأْتُمْ بِهِ، وَلَا لَكِن مَّا تَعَمَّدَتْ

قُلُوبُكُمْ...﴾ [الأحزاب: 5]

{la yell ka be ne yāmba y sēn tudg būmb ning pugē ye, la yell sēn n be yaa yāmb sēn maan pu-toog ne būmb ninga y sūyā pusē wā} [Al-ahzaabu: 5], Rēnd yel gudgds nins fāa Wēnd sēn gudg-b ne hagiimd rīkdā, ned sā n maan-ba ne zulem maa yīmbu maa b modg-a lame rēnd yell ka a zug ye, la a padangā sēn wat n yāk n bas-a tek fāa yaa tīlae ne-a t'a bas būmb ning sēn pa segd tī yē maan-a wā.

S52: Pag ning sēn tar rogem zumā, a rogmā zum sā n sung yūubā raare (hagiimdā rasema nii wā raare), t'a pisd hagiimdā zeng-raadā sā n ka Tawaafā maanego la kēnā (Safaa la Marwaa suka), la pagā a yāame tī yēnda pekrā sunga yulgre la yaa rasem piig loogr poorē bala, rē yīnga pug-kāngā a tōe n yulgdame n so koom, la a maan zeng-raoog ning sēn kellā sēn yaa hagiimdā Tawaafā?

L52: Ka sōmb ne-a t'a so la a maan Tawaafā halī t'a wa tug n tall bāng-n-wāaka tī zumā wāagame, la būmb ning b sēn fasemd sokrā pugē a sēn wa n tug n yeele: (t'a sunga yulgrā) Yaa t'a ka yā yulgrā zāng ye, rēnd yaa tīlae t'a yā yulgrā zānga, rēnd wakat ning a sēn n wat n yulgā bī a so, la a maan Tawaafā la kēnā (Safaa la Marwaa suka).

La a sā n kēne (Safaa la Marwaa suka) taor t'a na n ka maan Tawaafā yell ka be ye, bala Nabiyaamā -Wēnd puosg

la A tulgr be a yīnga- b sok-a la hagiimdē wā, ned ning sēn maana kēna (Safaa la Marwaa suka) taor t'a na n ka gilg Roogā buud yaa wānā, t'a yeele: «yell ka be ye».

S53: Pag sēn ruk a [hraam t'a na n maana hagiimdu la yaa Sayli wā (Mak kirengē wā) la a ruk [hraamā la mikame t'a yaa Pekar soaba, la a sēn wa n ta Makā a kēnga Gidda; a tulsem sēn be beenē sababo, la a Pekarā yulga Gidda t'a so, n sāas a zoobdā, rē poorē t'a pids a hagiimdā, rē yīnga a hagiimdā manegame bu? La rē yīnga būmb n zao a zug bu?

L53: A hagiimdā manegame, būmb me ka be a zug ye.

S54: Mam yaa pag sēn rabd Umra, la mam taame n puug hagiimdā rukr zīgē ti mam tara Pekre, ti mam pa ning m [hraamā ye, la mam paa Maka halu n wa tug n yulge, ti mam ruk [hraama Maka, rē yīnga woto sakdame bu? bi yaa wān-wān la m maanda? La yaa bōe n yaa tulae n zao maam?

L54: Tuum-kānga ka segd ye, la pag ning sēn rat n maan Umra ka sakd ne-a t'a zuug yē hagiimdā rukr zīsē wā rēndame t'a ninga [hraama baa ti mikame t'a tara Pekre, rēnd a rukda a hagiimdā t'a yaa Pekar soaba, t'a [hraama rukr yaa sēn loe, a manegame, La yē daliili: yaa ti Asmaa Binti Umays, sēn yaa a Abuubakar pagā,-Wēnd yard be b

yīibā yīnga- a rogame, la mikame ti Nabiyaamā -Wēnd puusg la A tulgr be a yīnga- yaa sēn na sigd ZulHulayfat, n rat n na n kēng Wēnd na wat-ne hagiimdā, ti Asmaa-u tum ti keng Nabiyaamā -Wēnd puusg la A tulgr be a yīnga-nengē n sok-a t'a maanda wānā? Ti Nabiyaamā yeele: «so, la f sēbg ne fuugu, la f yeelg f [hraamā]», la Pekarā zum buudo yaa wala rogmā zum bala. Rēnd d yeta pag ninga sēn tara Pekarā, t'a sā n tug n puug b hagiimdā rŭkr zīigē, ti mikame ti yē rata Umra maa hagiimdu, d yet-a lame: t'a so, la a maneg n sēb ne futu, n rŭk a [hraamā], la sēn yet t'a sēb ne fuugā rat n yeelame: t'a baooda kuudga n sēbg a taoore, n loe, rē poorē t'a yeelg [hraamā], zem ti yaa hagiimdu maa yaa Umra, la a sā n maan woto n wa ta Maka a ka kēngd Roogē wā ye, a ka gilgd-a me halŭ t'a wa yulge, rē n kŭt ti Nabiyaamā -Wēnd puusg la A tulgr be a yīnga- yeel a Aaisa, sasa ning a sēn wa n yānd haydā a Umrā wā wakatā, a yeel-a lame: «maan būmbā fāa hagiimbā sēn maandā, la f ra gilg Roogā halŭ ti f wa yulge» Woto yaa Albuhaarŭ la a Muslim togs g pugē, la leb n waa Albuhaarŭ pugē yesa, t'a Aaisa togsame ti yēnda sēn wa n yulgā a gilga Roogā, la Safaa la Marwaa, ti wāndŭ wilgdē ti pag sā n kē hagiimdā tuuma n rŭka Anniy wā ne hagiimdu maa Umra ti mikame t'a yaa Pekar soaba, maa Pekarā wa-a lame taoor t'a na n ka maan Tawaafā, rēnd a ka maand

Tawaafã ye, a leb n ka kēnd Safaa la Marwaa halı t'a tug n yulge la a so.

la sã n mikame t'a gilga Roogã ti yēnda yaa yulenga, ti yaa Tawaafã poorē la haydã wa a nengē, rēnd a kelldame n tonge, la a maan Safaa la Marwaa baa ti haydã sã n be a zugu, la a wōrs a zoobdã, n sees a Umrã wã; bala Safaa la Marwaa suk kēnã yulgr ka sart a pugē ye.

S55: M yii Yambu n na n maan Umra maam ne m nebã, la mam sēn wa n ta Gidda wã mam pagã yã a Pekrã, la mam kell n pidsa Umrã wã maam m yembre la m bas m pagã, la buudã yaa wãn-wãna sēn kēed ne mam pagã?

L55: Sã n yaa ne fo pagã buudo, yaa a kell n pa woto bala halı t'a wa tug n yulge: rē poorē t'a wa tug n rol a Umrã wã; bala Nabiyaamã -Wēnd puusg la A tulgr be a yīnga- a Safiyya sēn wa n yã a Pekrã, a yeelame «rē yīnga a na n yaoola tōnd laa?» Ti b yeele: ad a paamame n maan Tawaaf Al-ıfaada wã ". T'a yeele: «sã n yaa woto bu d looge», rēnd a koεgã a sēn yeelã -Wēnd puusg la A tulgr be a yīnga-: «rē yīnga a na n yaoola tōnd laa?» yaa daliil n wīnigdē ti yaa tulae ne paga t'a kell n pa -t'a sã n wa yã a Pekrã taoor t'a na n ka maan Tawaaf Al-ıfaadã wã- halı t'a tug n yulge, rē poorē t'a yaool n maan Tawaafã,

yaa woto bala, Umrã wã me Tawaafã a yaa wala hagiimdã Tawaafã; bala a yaa zeng-raoog Umra wã pugẽ, rënd pag sën rukd Umra sã n yã a Pekrã taoor t'a na n ka maan Tawaafã, a kolledame halu t'a wa tug n yulge, rë poorẽ t'a yaool n maan Tawaafã.

S56: Rë yĩngã kēnã zīgã (Safaa la Marwaa) lagma ne Harma pug bu? La rë yĩnga Pekar soaba tõeeme n pēneg beenẽ? La rë yĩnga yaa tulae n zao ne ned ninga sën kē Harmẽ wã la a tūu Kēna zīgẽ n kē t'a maan miisr pugẽ kōom rakaar a yīibã?

L56: Būmb ning sën vēnegde, yaa tu Mas'aa wã (kēnã) zīgẽ a ka lagem miisrã yẽ, rë n kut tu b maan lalga n welg b yīibã ne taab suka, la yaa lalg sën yaa koεεga, la sik ka be tu woto la sōma ne nebã, bala b sã n kēes-a miisrã puga, n maan t'a lagem taaba, rag n na n mikame tu pag sã n yã a Pekarã Tawaafã ne Safaa kēna suka gudga ne yẽ t'a kēne Safaa ne Marwaa sukaa.

La mam sën maan fatwa ne gomd ninga, yaa t'a sã n yã a Pekarã Tawaafã poorẽ, taoor t'a na n ka maan Safaa la Marwaa kēna, bu a kēne; bala Mas'aa wã (Şafaa la Marwaa) a ka lagem miisrã ye.

La sã n yaa miisrã kōom Puusgã b tõeeme n yeele tu ned sã n kēn a sën maan Tawaafã poorẽ, rë poorẽ t'a lebg n

wa miisrē wā bi a puus-a, la a sã n bas-a me yell ka be ye, la sōma sēn yud ne-a yaa a zaeeg sēkã n puus Rakaar a yiibu; Puusgã sēn tar yudlem zĩ-kãngã wã yĩnga.

S57: Mam maana hagiimdu, la mam pekrã waame, la mam zoe yãnde n na n togs neda, la maam kēe Harmã n puuse, la m maan Tawaafã, la m kēn Safaa ne Marwaa sukã, rēnd yaa bōe n be mam zugu? La y bãng ti pekrã waa rogmã zum poorē?

L57: Ka segd ne paga t'a sã n tara Pekre, maa rogem zum, t'a puus ye, zem t'a bee Maka, maa a bee a tēngē wã, maa a sēn be zīg ning fãa; ne Nabiyaamã koεeg sēn yeele, *Wēnd puusg la A tulgr be a yĩnga*, pag yellē wã: «*Rē yĩnga a sã n yã hayde (pekre), a ka basd Puusgã, la no-loeer laa?*», la sɪdã, Iɪslaambã tigma taaba ti ad ka sōmb ne Pekar soaba t'a loe noore, ka sōmb ne-a t'a puuse.

La sōmba ne pug-kãngã sēn maan woto wã, t'a tuub n tug Wēnd nengē, la a kos yaafa ne bũmb ning sēn paam-a wã.

La sã n yaa Tawaafã a sēn maan t'a be Haydã pugē wã, yē ka maneg ye, la sã n yaa Sa'aya (kēnã) rē manegame, bala koεeg sēn wili yaa ti sakdame ti b reng n maan Sa'ay (kēn Safaa la Marwaa) la b yaool n wa maan Tawaaf hagiimdã pugē, woto n kite, ti yaa tɪlae ne-a t'a lebg n wa

maan a Tawaafã, bala hagiimdã Tawaaf Al-lfaada wã, a yaa zeng raogo hagiimdã zeng raad pugẽ, la ned yidg n yi hagiimdã zãngã ka piti rëndame t'a maan-a.

La d sã n na n tik rënda, d mikdame tı pug-kãngã, a sıda ka sōmb n kē ne-a ye, sã n mikame t'a yaa sēn furi, halı t'a wa tug n maan Tawaafı, b leb n ka loet-a furi- t'a sã n na ka furi- halı t'a tug n maan Tawaafã. La Wënd n yud ne minim.

S58: Pag sã n yã a Pekrã Arafa wã raare, a maanda wãñã?

L58: Pag sã n yã Pekar Arafa raare, a kelled n kēnga ne a hagiimdã, la a maan nebã sēn maandã, la ad a ka maan Tawaafã halı t'a wa tug n yulge.

S59: Pag sã n yã a Pekrã tı yaa a sēn lob suutãanã (Gemrat Al-akaba) poorẽ, taor t'a na n ka maan Tawaafı, la mikame tı yẽ ne a sıdã b yaga ne tũud-n-taase, rënd böe n be ne-a t'a maane? La y bãng tı pug-kãngã ka tõe n le lebg n wa t'a sã n bob ye.

L59: Sã n mikame t'a ka tõe n lebg n wa, a manegdame n sēb sōma, rē poorẽ t'a maan a Tawaafã Daruurã yĩnga, la yell ka be ne-a, la a pids a hagiimdã tuumã fãa gilli sēn ketã.

S60: Pag rogem zum sã n yulg taor tu rasem pis-naasã na n ka ta, rē yĩnga a hagiimd manegdame bu? La a sã n ka yulge a maanda wãñã? La y bãng tu yaa pag sãn maana a Anniy ne hagiimdã kěngre?

L60: Rogem zum soaba a sã n yulg tu rasem pis-naasã na n ka ta, a soodame, la a puuse, la a maan pagbã fãa sãn maan bũmb ningã wã halu n tug n tãag Tawaafã, bala rogemã zum a sãn paaod n yuda ka yãk toaag ye, la sã n mikame t'a ka yã yulgrã a hagiimdã le yaa sõma, la a ka sõmb n gilg Roogã halu t'a tug n yulge; bala Nabiyaamã - **Wěnd puusg la A tulgr be a yĩnga-** a gudga sãn tara-b Pekrã n yi Roogã gilgri, la rogmã zumã me yaa wala Pekrã bala yell-kãngã pugẽ.

Index

Sogsg pis-yoob sēn gomd Haydā (Pekrā) la Nifaasā (rogem-zum) buudo.....	1
Gom-tuusgo:.....	3
Sēn be Haydā (pekrā) buud-rāmbē Puusgē wā la no-loeerē wā	4
Sēn be Haydā yūlgr buud-rāmb pugē Puusgē wā	32
Pekrā buud-rāmb sānda hagiimdē wā la Umra wā maanegē.	38

Get to know more about Islam

in more than
100 languages



موسوعة الأحاديث النبوية
HadeethEnc.com



Accurate translations of
Prophetic Hadiths and their
explanations in more than
(60) languages.



بيان الإسلام
byenah.com



Selected materials to
introduce and teach
Islam in more than
(120) languages.



موسوعة القرآن الكريم
QuranEnc.com



Accurate translations
of the meanings of the
Quran in more than
(75) languages.



موسوعات وخدمات إسلامية باللغات
s.islamenc.com



For more websites
in world languages
(s.islamcontent.com)



موسوعة المحتوى الإسلامي باللغات
islamcontent.com



Various and comprehensive
Islamic materials in more
than (125) languages.



ملا يسع أطفال المسلمين بحهله
kids.islamenc.com



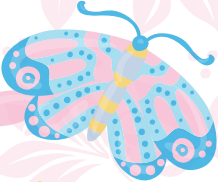
Questions and answers for
Muslim children and public in
more than (40) languages.

جمعية خدمة المحتوى
الإسلامي باللغات



جمعية الدعوة
وتوعية الجاليات بالربوة





Mos138